



S-60 '99-'03

TH-505HEF (VM-463EHP)

ELECTRIC, HEATED, PRIMED COVER, W/GLASS BASE, **W/ FOOT LAMP**

TH-505EBF (VM-463EB)

ELECTRIC, HEATED, POWER FOLDABLE, PRIMED COVER, W/GLASS BASE, **W/ FOOT LAMP**

TH-505MBF (VM-463EBC)

ELECTRIC, HEATED, POWER FOLDABLE, MEMORY, PRIMED COVER, W/GLASS BASE, **W/ FOOT LAMP**



S-80 '99-'03

TH-80-03HEF (VM-468EHP)

ELECTRIC, HEATED, PRIMED COVER, W/GLASS BASE, **W/ FOOT LAMP**

TH-80-03EBF (VM-468EB)

ELECTRIC, HEATED, POWER FOLDABLE, PRIMED COVER, W/GLASS BASE, **W/ FOOT LAMP**

TH-80-03MEF (VM-468EHC)

ELECTRIC, HEATED, MEMORY, PRIMED COVER, W/GLASS BASE, **W/ FOOT LAMP**

TH-80-03MBF (VM-468EBC)

ELECTRIC, HEATED, POWER FOLDABLE, MEMORY, PRIMED COVER, W/GLASS BASE, **W/ FOOT LAMP**



S-60, S-80 '99-'03

TH-505HS (VM-463CP)

MIRROR BLACK PRIMED COVER ONLY

S60, S80 '99-'03

TH-505AG L (VM-463AG L)

MIRROR ASPHERICAL GLASS BASE W/O HEATED

TH-505G R (VM-463G R)

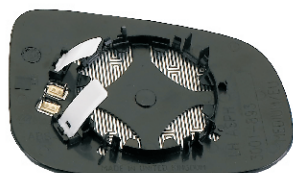
MIRROR CONVEX GLASS BASE W/O HEATED

TH-505AGH L (VM-463AGH L)

MIRROR ASPHERICAL GLASS BASE W/ HEATED

TH-505GH R (VM-463GH R)

MIRROR CONVEX GLASS BASE W/ HEATED



C30, S60, V60 '12-

TH-510AGH (VM-469AGH)

MIRROR ASPHERICAL GLASS BASE, WITH HEATED



240 '85-'91

TH-2404

(VM-240B)

CABLE TYPE

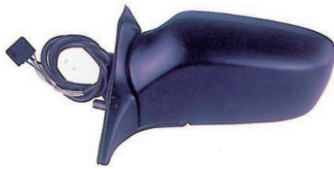


240 '85-'91

TH-2400

(VM-240)

ELECTRIC TYPE, (4-PINS, ROUND CONNECTOR)



240 '91-'92

TH-2401A

(VM-240C)

ELECTRIC TYPE, (4-PINS, SQUARE CONNECTOR)



240 '92-

TH-2401

(VM-240A)

ELECTRIC, HEATED, (5-PINS, SQUARE CONNECTOR)



260 /264

TH-2600

(VM-260)

ELECTRIC TYPE, (4-PINS, ROUND CONNECTOR)



740 760 '96-

TH-7400

(VM-740)

ELECTRIC, HEATED, (5-PINS, SQUARE CONNECTOR)



740 760 '88-
TH-7401 (VM-740A)
ELECTRIC TYPE, (4-PINS, SQUARE CONNECTOR)



740 760 '86-
TH-7403 (VM-740C)
ELECTRIC TYPE, (4-PINS, ROUND CONNECTOR)



740 760 '86-
TH-7404 (VM-740B)
CABLE TYPE



850 S70 V70 '92-'00
TH-8500 (VM-850)
ELECTRIC, HEATED



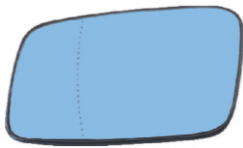
850 S70 V70 '92-'00
TH-8503 (VM-850B)
CABLE TYPE



850 S70 V70 '92-'00
TH-8504 (VM-850H)
CABLE TYPE, W/ HEATED



850 S70 V70 '92-'00
TH-8500HS (VM-850HS)
 MIRROR PRIMED COVER ONLY



850 S70 V70 '92-'00
TH-8500G (VM-850G)
 MIRROR CONVEX GLASS BASE W/O HEATED

TH-8500AG (VM-850AG)
 MIRROR ASPHERICAL GLASS BASE W/O HEATED

TH-8500GH (VM-850GH)
 MIRROR CONVEX GLASS BASE W/ HEATED

TH-8500AGH (VM-850AGH)
 MIRROR ASPHERICAL GLASS BASE W/ HEATED



S40 V40 '96-'04
TH-4600 (VM-460)
 ELECTRIC, HEATED



S40 V40 '96-'04
TH-4603 (VM-460B)
 CABLE TYPE



S40 V40 '96-'04
TH-4604 (VM-460H)
 CABLE TYPE, W/ HEATED



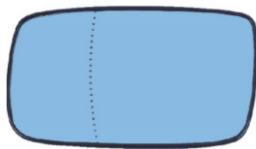
S40 V40 '96-'04
TH-4600HS (VM-460HS)
 MIRROR PRIMED COVER ONLY



940 960 '92-'00
TH-9600 (VM-960)
 ELECTRIC, HEATED



940 960 1991-ONLY
TH-9600A (VM-960A)
 ELECTRIC, HEATED, (5-PINS SQUARE CONNECTOR)



940 960 S90 '92-'00
TH-9600G (VM-960G)
 MIRROR CONVEX GLASS BASE W/O HEATED
TH-9600AG (VM-960AG)
 MIRROR ASPHERICAL GLASS BASE W/O HEATED
TH-9600GH (VM-960GH)
 MIRROR CONVEX GLASS BASE W/ HEATED
TH-9600AGH (VM-960AGH)
 MIRROR ASPHERICAL GLASS BASE W/ HEATED



S40, S60, V50, V70 '07-
TH-501AGH (VM-462AGH)
 MIRROR ASPHERICAL GLASS BASE W/ HEATED & REPELLENCY
TH-501AG (VM-462AG)
 MIRROR ASPHERICAL GLASS BASE W/O HEATED, W/ REPELLENCY



XC70 '01-'06 / XC90 '03-'06
TH-502G R (VM-466G R)
 MIRROR CONVEX GLASS BASE W/O HEATED
TH-502AG L (VM-466AG L)
 MIRROR ASPHERICAL GLASS BASE W/O HEATED
TH-502GH R (VM-466GH R)
 MIRROR CONVEX GLASS BASE W/ HEATED
TH-502AGH L (VM-466AGH L)
 MIRROR ASPHERICAL GLASS BASE W/ HEATED



XC70, XC90, '05-'06

TH-503AGH (VM-467AGH)
MIRROR ASPHERICAL GLASS BASE W/ HEATED & REPELLENCY

TH-503AG (VM-467AG)
MIRROR ASPHERICAL GLASS BASE W/O HEATED, W/ REPELLENCY



S60, S80, V70 II '07-

TH-504AGH (VM-465AGH)
MIRROR ASPHERICAL GLASS BASE W/ HEATED & REPELLENCY

TH-504AG (VM-465AG)
MIRROR ASPHERICAL GLASS BASE W/O HEATED, W/ REPELLENCY



S60, S80 '99-'03

TH-505G R (VM-463G R)
MIRROR CONVEX GLASS BASE W/O HEATED

TH-505AG L (VM-463AG L)
MIRROR ASPHERICAL GLASS BASE W/O HEATED

TH-505GH R (VM-463GH R)
MIRROR CONVEX GLASS BASE W/ HEATED

TH-505AGH L (VM-463AGH L)
MIRROR ASPHERICAL GLASS BASE W/ HEATED



S60, S80 '04-'06

TH-506G R (VM-464G R)
MIRROR CONVEX GLASS BASE W/O HEATED

TH-506AG L (VM-464AG L)
MIRROR ASPHERICAL GLASS BASE W/O HEATED

TH-506GH R (VM-464GH R)
MIRROR CONVEX GLASS BASE W/ HEATED

TH-506AGH L (VM-464AGH L)
MIRROR ASPHERICAL GLASS BASE W/ HEATED



S40, V50 '04-'06 / C70 '04-'07

TH-507G R (VM-461G R)
MIRROR CONVEX GLASS BASE W/O HEATED

TH-507AG L (VM-461AG L)
MIRROR ASPHERICAL GLASS BASE W/O HEATED

TH-507GH R (VM-461GH R)
MIRROR CONVEX GLASS BASE W/ HEATED

TH-507AGH L (VM-461AGH L)
MIRROR ASPHERICAL GLASS BASE W/ HEATED